

Thomas & Betts

***Fast and Flexible Protection
for Electrical Cables!***

T&B® Fittings

Shureflex™
Nylon Liquidtight
Conduit System



Shureflex™ Nylon Liquidtight Conduit System



Quick and Secure One-Piece Fitting Installation with No Tools Required!

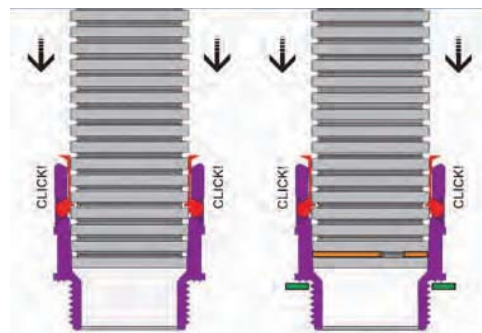
The new line of Shureflex™ Nylon Liquidtight Conduit and Fittings from Thomas & Betts provides all of the benefits of a halogen-free, watertight system for protection of electrical cables — plus hassle-free installation to save you time and money.

With its unique, self-locking mechanism, the Shureflex™ system enables quick and secure installation without tools. Simply push the fitting onto the conduit, and you've achieved an IP66-rated seal with superior mechanical strength. For a higher IP rating, use the same fitting; just add a sealing washer to the fitting and an O-ring to the conduit. Now you've achieved IP68 and IP69K protection. Disconnecting is just as easy — press the release ring on the fitting and twist and pull out the conduit. No tools are needed, and you can reuse both conduit and fittings.

The T&B® Shureflex™ Nylon Liquidtight Conduit System includes three grades of conduit to meet varying flexibility and crush-resistance needs. Choose among straight and 90° fittings with NPT and ISO threads, T fittings, Y distributors and a variety of other available fittings for special applications — plus a full range of accessories like sealing washers, O-rings, locknuts and mounting brackets — to meet all of your needs for safe, secure and watertight connections.

The best performance in only one piece!

"Easy click" quick assembly



IP66



Insert the conduit all the way into the connector.

IP68

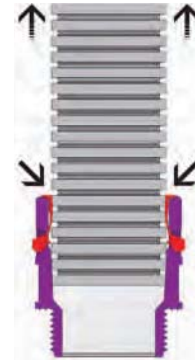


Follow the process explained for IP66, but first insert an O-ring on the first groove of the conduit and a sealing washer on the thread at the base of the connector.

IP69K



"Easy unlock" quick removal without tools



It is extremely easy to remove the tube: Press the conduit and the release ring against the body of the connector and then, keeping the release ring pressed, pull the conduit outwards, while twisting it. Both connector and conduit can be reused, following the assembly instructions given.

- Flexible, lightweight Polyamide 6 or 12 (PA6 or PA12) construction
- Halogen-, phosphor- and cadmium-free material — ideal for use in confined spaces
- UL94V-2 or UL94HB flammability rating for safety
- Achieve IP66, IP68 and IP69K watertight ratings with just one fitting
- Wide operating temperature range of -40° C to 105° C or -50° C to 90° C
- Complete system includes three grades of conduit, a variety of fittings and accessories
- UL Recognized

Applications:

- Wind turbines
- Passenger rail
- Shipbuilding
- Robotics
- Aviation
- Automotive
- Machine Builders
- Tunnels
- Telecom
- Confined Spaces
- Use Indoors or Outdoors

Shureflex™ Nylon Conduit Fittings

High-performance fittings with a unique self-locking mechanism!

- Quick and secure installation — one-piece assembly with no tools required
- Watertight protection (IP66 rating standard) and outstanding pull-out strength
- Recommended for connecting Shureflex™ nylon conduit in electrical installations
- Made from Polyamide 6 (PA6) — halogen-, phosphor- and cadmium-free
- UL94V-2 flammability rated
- Temperature range of -40° C to 105° C (150° C short term)



Straight Fittings — NPT Thread

Cat. Number	Thread Size (NPT)	Conduit Nom. Size (mm)	Std. Pkg (Qty.)	UPC Number
NY-SF17-BK050	1/2	17	100	786209-91576
NY-SF23-BK075	3/4	23	50	786209-91577
NY-SF29-BK100	1	29	30	786209-91578
NY-SF36-BK125	1 1/4	36	20	786209-91579
NY-SF48-BK150	1 1/2	48	10	786209-91580
NY-SF48-BK200	2	48	10	786209-91581



Straight Fittings — ISO Thread

Cat. Number	Thread Size (ISO)	Conduit Nom. Size (mm)	Std. Pkg (Qty.)	UPC Number
NY-SF07-BKM12	M12	7	100	786210-93453
NY-SF10-BKM16	M16	10	100	786210-93454
NY-SF12-BKM16	M16	12	100	786210-93456
NY-SF12-BKM20	M20	12	100	786210-93457
NY-SF17-BKM20	M20	17	100	786210-93463
NY-SF23-BKM25	M25	23	50	786210-93464
NY-SF29-BKM32	M32	29	30	786210-93572
NY-SF36-BKM40	M40	36	20	786210-93466
NY-SF48-BKM50	M50	48	10	786210-93467



90° Angle Fittings — NPT Thread

Cat. Number	Thread Size (NPT)	Conduit Nom. Size (mm)	Std. Pkg (Qty.)	UPC Number
NY-90F17-BK050	1/2	17	100	786209-91582
NY-90F23-BK075	3/4	23	50	786209-91583
NY-90F29-BK100	1	29	30	786209-91584
NY-90F36-BK125	1 1/4	36	20	786209-91585
NY-90F48-BK150	1 1/2	48	10	786209-91586
NY-90F48-BK200	2	48	10	786209-91587

90° Angle Fittings — ISO Thread

Cat. Number	Thread Size (ISO)	Conduit Nom. Size (mm)	Std. Pkg (Qty.)	UPC Number
NY-90F10-BKM16	M16	10	50	786210-93663
NY-90F12-BKM16	M16	12	50	786210-93664
NY-90F12-BKM20	M20	12	50	786210-93665
NY-90F17-BKM20	M20	17	50	786210-93666
NY-90F23-BKM25	M25	23	30	786210-93667
NY-90F29-BKM32	M32	29	20	786210-93668
NY-90F36-BKM40	M40	36	10	786210-93669
NY-90F48-BKM50	M50	48	10	786210-93671

Shureflex™ Nylon Conduit System



Y Distributors

Cat. Number	Conduit Nom. Size (mm)	Std. Pkg (Qty.)	UPC Number
NY-Y17-12-BK	(1) 17, (2) 12	20	786209-91588
NY-Y23-17-BK	(1) 23, (2) 17	20	786209-91589
NY-Y29-23-BK	(1) 29, (2) 23	10	786209-91592
NY-Y36-29-BK	(1) 36, (2) 29	5	786209-91593
NY-Y48-36-BK	(1) 48, (2) 36	5	786209-91594



T Fittings

Cat. Number	Conduit Nom. Size (mm)	Std. Pkg (Qty.)	UPC Number
NY-T10-BK	10	20	786210-96427
NY-T12-BK	12	20	786210-96428
NY-T17-BK	17	20	786210-96429
NY-T23-BK	23	10	786210-96430
NY-T29-BK	29	5	786210-96431
NY-T36-BK	36	5	786210-96432

O-Rings

- Use on Shureflex™ conduit to achieve IP68 and IP69K ratings
- Combined use of O-ring on conduit and sealing washer on fitting provides IP68 and IP69K ratings
- Made of NBR70 elastomer
- Insert in first groove of Shureflex™ nylon conduit before inserting conduit into fitting
- Temperature rating of -30° C to 100° C



O-Rings

Cat. Number	Conduit Nom. Size (mm)	Std. Pkg (Qty.)	UPC Number
NY-OR-07	7	100	786210-93544
NY-OR-10	10	100	786210-93545
NY-OR-12	12	100	786210-93546
NY-OR-17	17	100	786210-93547
NY-OR-23	23	50	786210-93548
NY-OR-29	24	30	786210-93549
NY-OR-36	36	20	786210-93550
NY-OR-48	48	10	786210-93551

Sealing Washers — NPT and ISO Thread

- Use on Shureflex™ fittings to achieve IP68 and IP69K ratings
- Combined use of sealing washer on fitting and O-ring on conduit provides IP68 and IP69K rating
- Made of deformable, asbestos-free material
- Place around thread of Shureflex™ fitting, between fitting and entry panel
- Temperature rating of -40° C to 200° C



Sealing Washers — NPT and ISO Thread

Cat. Number	Thread Size	Std. Pkg. (Qty.)	UPC Number	Cat. Number	Thread Size	Std. Pkg. (Qty.)	UPC Number
NPT Thread				ISO Thread			
NY-SW-N050	½	100	786209-92415	NY-SW-M12	M12	100	786210-93526
NY-SW-N075	¾	100	786209-92416	NY-SW-M16	M16	100	786210-93527
NY-SW-N100	1	50	786209-92417	NY-SW-M20	M20	100	786210-93528
NY-SW-N125	1¼	30	786209-92420	NY-SW-M25	M25	50	786210-93530
NY-SW-N150	1½	20	786209-92422	NY-SW-M32	M32	30	786210-93532
NY-SW-N200	2	10	786209-92423	NY-SW-M40	M40	20	786210-93533
				NY-SW-M50	M50	10	786210-93534



Shureflex™ Nylon Conduit System

A fast, flexible and watertight system for protection of electrical cables!



Standard Grade (PA6) Conduit

- Very flexible and light
- Typical applications include general wiring, machine tools, industrial equipment and automotive
- UL94V-2 flammability rated
- Resistant to UV, fuel, mineral oil, grease and diluted bases
- Temperature rating of -40° C to 105° C (150° C short term)

Standard Grade (PA6) Conduit

Cat. Number	Conduit Size (mm)	I.D. (In.)	O.D. (In.)	Min. Bend Radius (In.)	Length (ft.)	UPC Number
NY-SG07-BK50	7	0.25	0.39	0.59	164	786210-93423
NY-SG10-BK50	10	0.38	0.51	0.79	164	786210-93424
NY-SG12-BK50	12	0.48	0.62	1.18	164	786210-93425
NY-SG17-BK50	17	0.66	0.83	1.57	164	786210-93426
NY-SG23-BK50	23	0.89	1.12	2.17	164	786210-93427
NY-SG29-BK50	29	1.11	1.36	2.56	164	786210-93428
NY-SG36-BK30	36	1.43	1.67	3.15	98	786210-93429
NY-SG48-BK30	48	1.87	2.15	3.74	98	786210-93430

Medium Grade (PA6) Conduit

- Flexible with increased mechanical strength for crush and impact resistance
- Typical applications include machine tools, industrial equipment and railway industry (rolling stock)
- UL94V-2 flammability rated
- Resistant to UV, fuel, mineral oil, grease and diluted bases
- Temperature rating of -40° C to 105° C (150° C short term)

Medium Grade (PA6) Conduit

Cat. Number	Conduit Size (mm)	I.D. (In.)	O.D. (In.)	Min. Bend Radius (In.)	Length (ft.)	UPC Number
NY-MG07-BK50	7	0.24	0.39	0.79	164	786210-93431
NY-MG10-BK50	10	0.38	0.51	0.98	164	786210-93432
NY-MG12-BK50	12	0.47	0.62	1.38	164	786210-93433
NY-MG17-BK30	17	0.65	0.83	1.97	98	786210-93434
NY-MG23-BK30	23	0.88	1.12	2.36	98	786210-93435
NY-MG29-BK30	29	1.11	1.36	2.76	98	786210-93437
NY-MG36-BK30	36	1.42	1.67	3.35	98	786210-93450
NY-MG48-BK30	48	1.85	2.15	3.94	98	786210-93451

Extra Flexible Grade (PA12) Conduit

- Extremely flexible in all environments
- Especially recommended for demanding applications requiring repetitive bending and flexing, such as robotics, automation and production equipment
- Temperature rating of -50° C to 90° C (140° C short term)

Extra Flexible Grade (PA12) Conduit

Cat. Number	Conduit Size (mm)	I.D. (In.)	O.D. (In.)	Min. Bend Radius (In.)	Length (ft.)	UPC Number
NY-EG07-BK50	7	0.24	0.39	0.79	164	786210-93790
NY-EG10-BK50	10	0.38	0.51	0.98	164	786210-93791
NY-EG12-BK50	12	0.47	0.62	1.38	164	786210-93792
NY-EG17-BK30	17	0.65	0.83	1.97	98	786210-93793
NY-EG23-BK30	23	0.88	1.12	2.36	98	786210-93794
NY-EG29-BK30	29	1.11	1.36	2.76	98	786210-93795
NY-EG36-BK10	36	1.42	1.67	3.35	32	786210-93796
NY-EG48-BK10	48	1.85	2.15	3.94	32	786210-93797



Accessories for Shureflex™ Nylon Conduit and Fittings

Locknuts — NPT and ISO Thread

- Mount Shureflex™ fittings on panels and enclosures
- Made of high-quality, halogen-, phosphor- and cadmium-free Polyamide (PA6)
- Thread style and size marked on locknut for immediate identification
- UL94V-2 flammability rating
- Temperature rating of -40° C to 105° C (150° C short term)



Locknuts — NPT and ISO Thread

Cat. Number	Thread Size	Std. Pkg. (Qty.)	UPC Number
<i>NPT Thread</i>			
NY-LNBK-N050	1/2	100	786204-92424
NY-LNBK-N075	3/4	100	786204-92425
NY-LNBK-N100	1	100	786204-92426
<i>ISO Thread</i>			
NY-LNBK-M12	M12	100	786210-93484
NY-LNBK-M16	M16	100	786210-93485
NY-LNBK-M20	M20	100	786210-93486
NY-LNBK-M25	M25	100	786210-93487
NY-LNBK-M32	M32	100	786210-93488
NY-LNBK-M40	M40	50	786210-93513
NY-LNBK-M50	M50	50	786210-93516

Mounting Brackets

- Quick and easy — just snap conduit into place
- Made of high-quality, halogen-free Polyamide (PA6.6)
- Screw-mounted for secure installation
- Releasable and reusable



Mounting Brackets

Cat. Number	Conduit Size (mm)	Std. Pkg. (Qty.)	UPC Number
NY-MB-07	7	10	786210-93782
NY-MB-10	10	10	786210-93783
NY-MB-12	12	10	786210-93784
NY-MB-17	17	10	786210-93785
NY-MB-23	23	10	786210-93786
NY-MB-29	29	10	786210-93787
NY-MB-36	36	5	786210-93788
NY-MB-48	48	5	786210-93789

In addition to the components listed, the Shureflex™ system also provides fittings for special applications

- PG-threaded connectors
- 45° connectors
- Metal thread, metric and PG connectors
- Sweep 90° connectors
- 90° flanged connectors
- Female-threaded connectors



www.tnb.com

Thomas & Betts

Please ask your Thomas & Betts sales representative for a complete catalog of quality Thomas & Betts electrical products or visit us at www.tnb.com. For customer service, call 1-800-816-7809. For technical questions, call 1-888-862-3289.

Thomas & Betts Corporation
Electrical Division
8155 T&B Boulevard
Memphis, TN 38125
901-252-5000