

BIM Overview

What does BIM Stand For?

Thomas&Betts

Building

Information

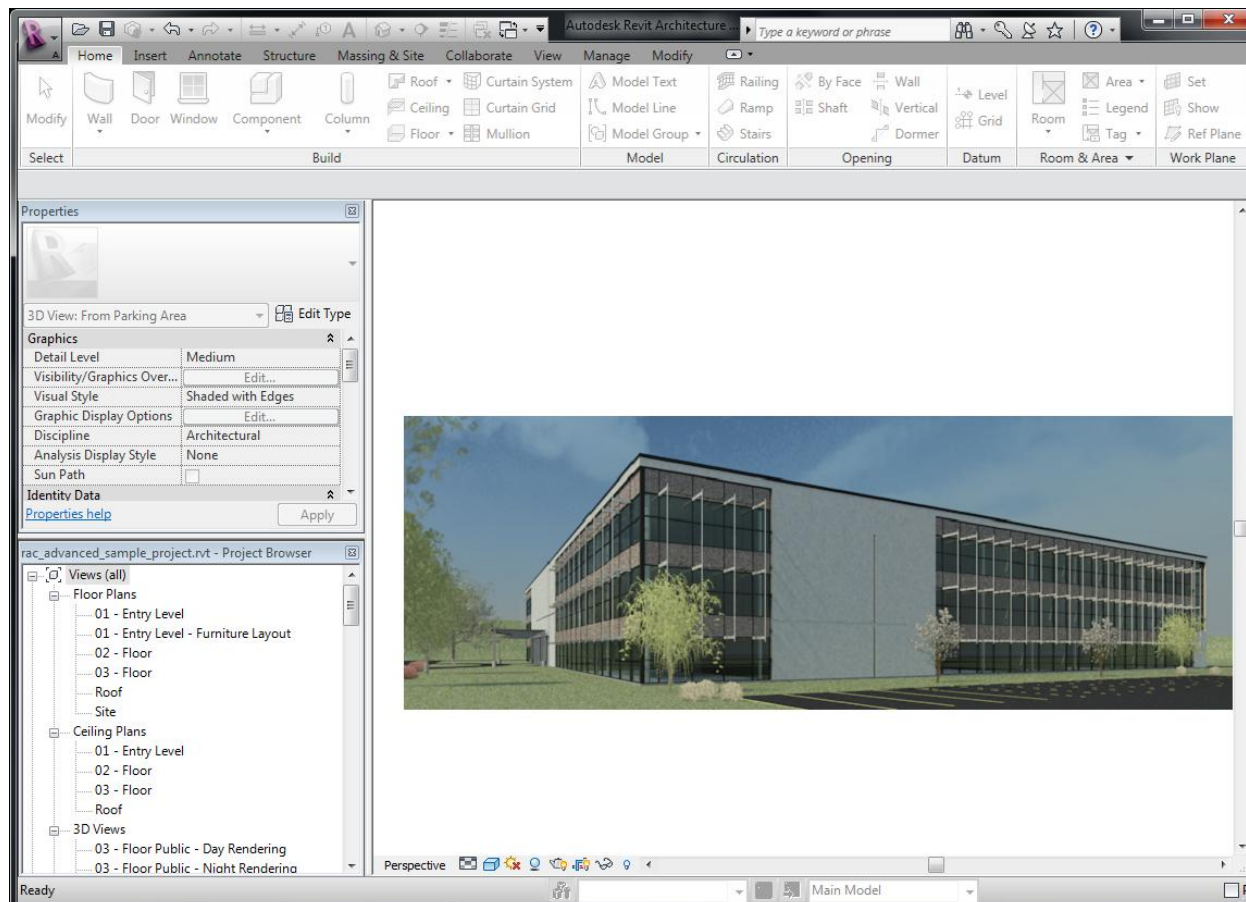
Modeling

What is BIM?

- Architectural 3D modeling for the complete life cycle of a building: Design, Construction, and Facility Management
- Contains both geometric and specification information about the building (materials, components, finishes, etc.).
- BIM software market leader: AutoDesk Revit
 - Approximately 70% Market Share

What is BIM?

- AutoDesk Revit screen shot: 3D building design



Who Uses BIM?

Thomas&Betts

- Architects
- MEP Systems Engineers (Mechanical, Electrical & Plumbing)
- Civil & Structural Engineers
- Contractors
- Building Owners & Facilities Managers

What are the Benefits of BIM?

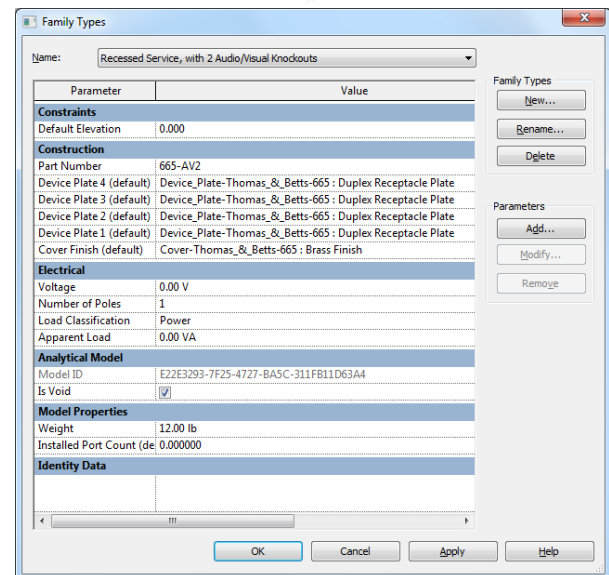
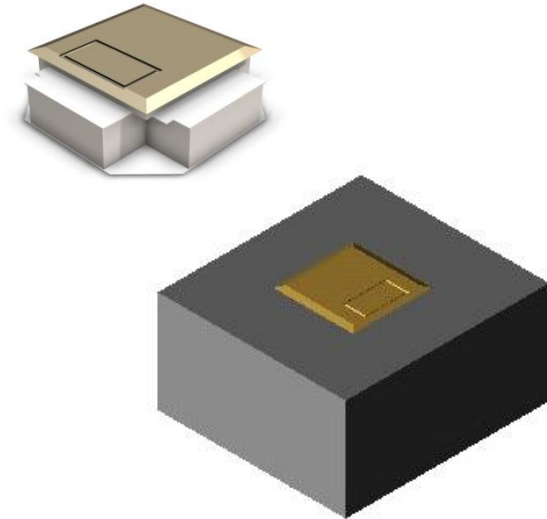
Thomas&Betts

- All information about a building design is stored in a single, intelligent 3D model that can be used throughout the life of the building.
- Conflicts between structural, mechanical, electrical and plumbing systems can be identified before construction begins to reduce rework.
- Material take-offs are much faster and more accurate since exact quantities of materials and components are stored in the model.

What are BIM Models?

Thomas & Betts

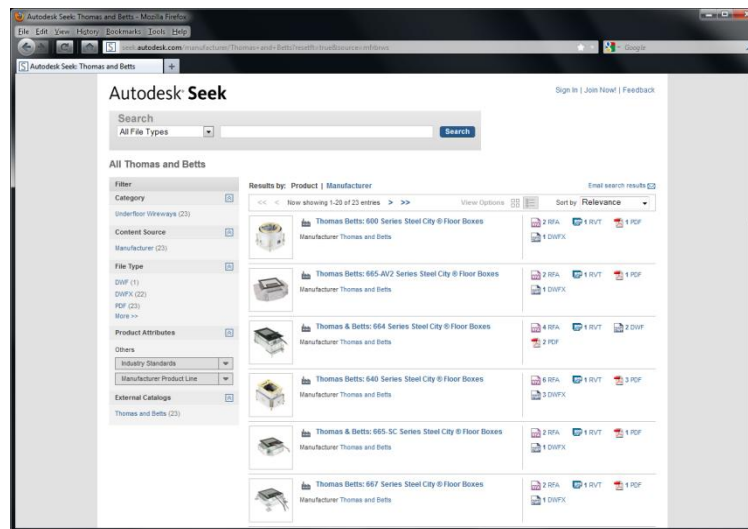
- Simplified 3D models of key building components
- Include basic geometry along with key attributes:
 - Part numbers / manufacturer
 - Sizes, materials, finishes
 - Specifications
- Provided by manufacturers for use by architects & engineers to add intelligence to building designs



Where are BIM Objects Stored?

Thomas&Betts

- **AutoDesk Seek Database**
- **Manufacturer's Websites**
- **Other 3rd Party Online Databases**



seek.autodesk.com

BIM Overview