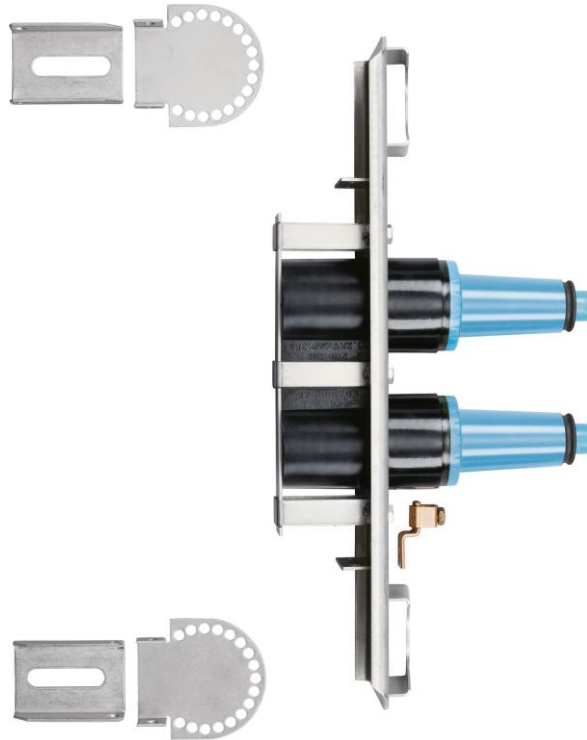


Issue Date: 10/11/2012

Page: 1 of 2

File: PSS-274J2

25kV	200A Loadbreak 2-Way Junction	w/ S.S. Bracket	274J2
------	-------------------------------	-----------------	-------



**Note:** Blue PBT Interface Shield available soon

## Features:

- 25kV, 200 Amp Loadbreak 2-Way Junction
- Fully shielded, fully submersible molded rubber housing
- 100% peroxide-cured construction includes insulation and conductive EPDM materials
- Provides mating for other Elastimold® loadbreak type products
- Provides mating for Elastimold® Elbow connectors
- Mounting hardware for flat or curved mounting positions

## 274J2 Loadbreak 2-Way Junction

### Applications:

ELASTIMOLD® junctions are designed for subsurface, vault or padmount applications and can be used for sectionalizing, looping, tapping, and equipment bypass. Junctions are designed to mate with other ELASTIMOLD® products including:

- 25kV Family of Elbow Connectors
- 370GLR Grounding Elbow
- 370TR Test Rod
- 273/274DRG Insulated Cap

ELASTIMOLD® loadbreak junctions, provide a fully shielded, fully submersible, separable, insulated assembly designed for energized operation. They are suitable for use on 25-kV class distribution systems, and rated for 200-ampere loadmake/loadbreak operation. Junctions are equipped with universal brackets that accommodate curved or flat surfaces and provide tilt mounting angles from 0° to 90° in 15° increments.

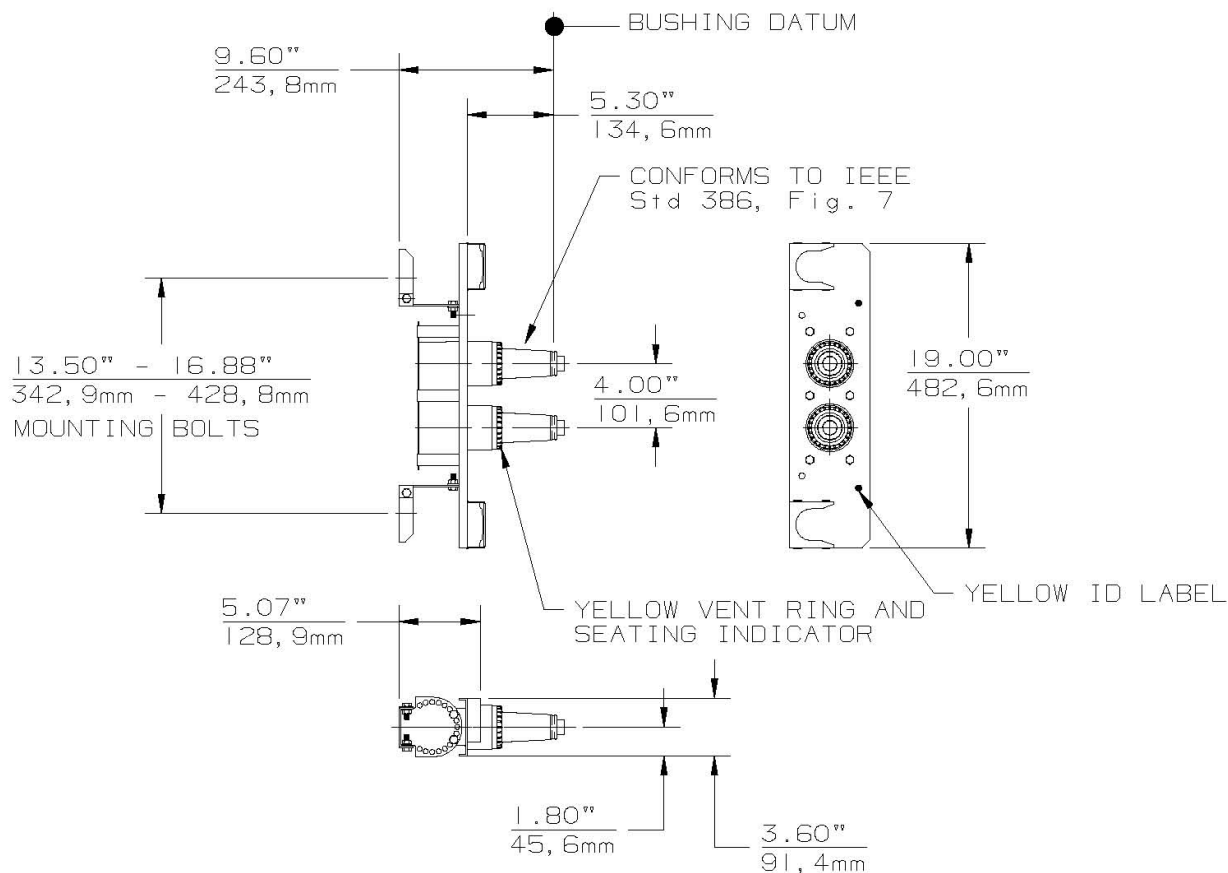
### Ratings:

Meets ANSI/IEEE Standard 386, Latest Revision

#### For 25kV Voltage Class:

15.2kV Phase-to-Ground – Operating Voltage  
 26.3kV Max Phase-to-Phase  
 125kV BIL – Impulse Withstand (1.2 x 50 microsecond wave)  
 40kV AC – One minute withstand  
 78kV DC – 15 minutes withstand  
 19kV AC – Corona Extinction @ 3pC sensitivity  
 200 Amp – Continuous and Loadbreak  
 10kA Sym – 10 Cycles Momentary & Fault Close

25kV	<b>200A Loadbreak 2-Way Junction</b>	w/ S.S. Bracket	274J2
------	--------------------------------------	-----------------	-------



**Each kit contains the following:**

- |   |                          |         |
|---|--------------------------|---------|
| 1 | Basic molded junction    | 274J2   |
| 2 | Protective shipping cap  | 2701-41 |
| 2 | Tube, lubricant          | 82-08   |
| 1 | Installation instruction | IS-0798 |

**Ordering Instructions:**

Specify **274J2** for 25kV, 200 Amp, 2-way Loadbreak Junction.

Add "-5" at the end of the catalog number for Junctions with "U" style mounting straps only.