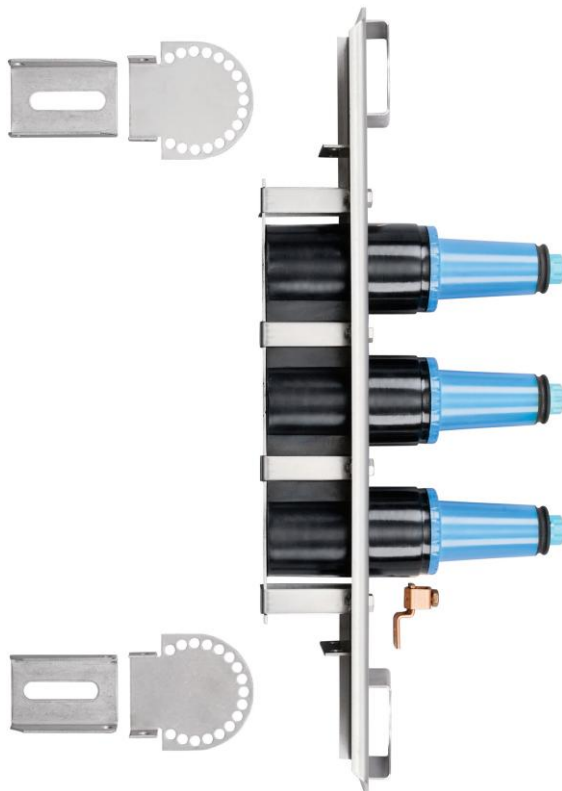


25kV	200A Loadbreak 3-Way Junction	w/ S.S. Bracket	274J3
------	-------------------------------	-----------------	-------



Note: Blue PBT Interface Shield available soon

Features:

- 25kV, 200 Amp Loadbreak 3-Way Junction
- Fully shielded, fully submersible molded rubber housing
- 100% peroxide-cured construction includes insulation and conductive EPDM materials
- Provides mating for other Elastimold® loadbreak type products
- Provides mating for Elastimold® Elbow connectors
- Mounting hardware for flat or curved mounting positions

274J3 Loadbreak 3-Way Junction

Applications:

ELASTIMOLD® junctions are designed for subsurface, vault or padmount applications and can be used for sectionalizing, looping, tapping, and equipment bypass. Junctions are designed to mate with other ELASTIMOLD® products including:

- 25kV Family of Elbow Connectors
- 370GLR Grounding Elbow
- 370TR Test Rod
- 273/274DRG Insulated Cap

ELASTIMOLD® loadbreak junctions, provide a fully shielded, fully submersible, separable, insulated assembly designed for energized operation. They are suitable for use on 25-kV class distribution systems, and rated for 200-ampere loadmake/loadbreak operation. Junctions are equipped with universal brackets that accommodate curved or flat surfaces and provide tilt mounting angles from 0° to 90° in 15° increments.

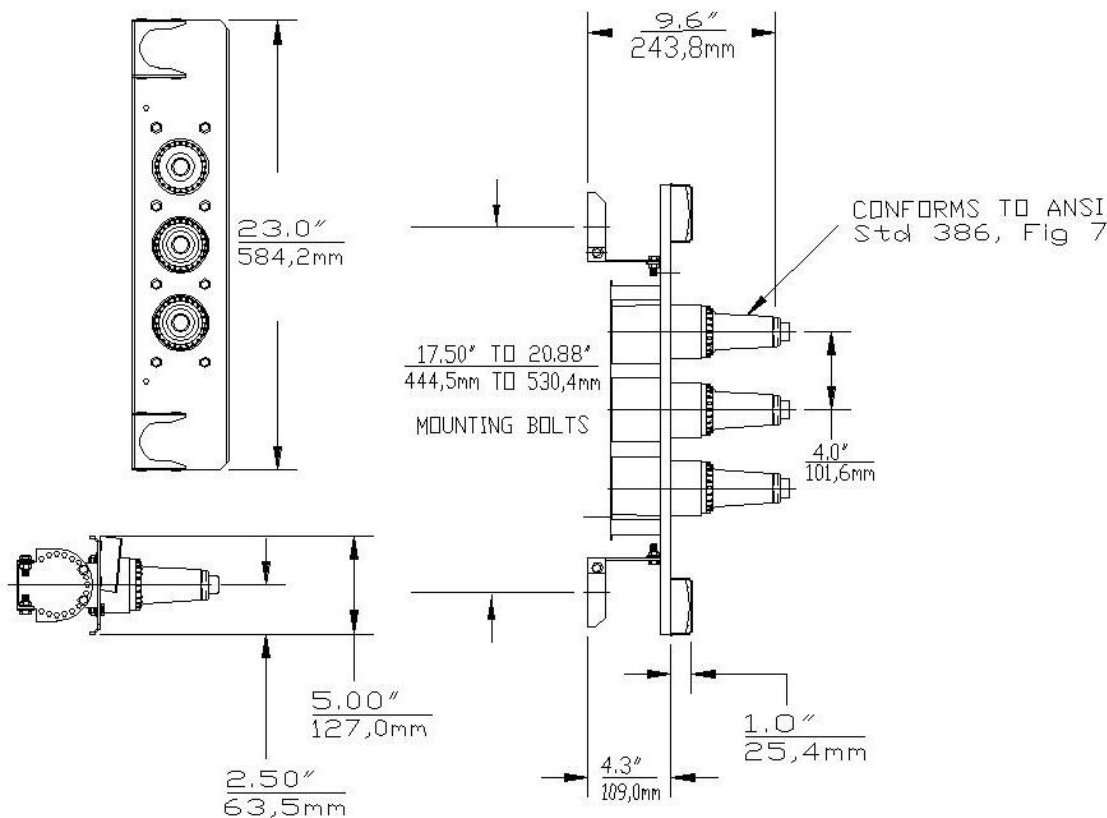
Ratings:

Meets ANSI/IEEE Standard 386, Latest Revision

For 25kV Voltage Class:

15.2kV Phase-to-Ground – Operating Voltage
 26.3kV Max Phase-to-Phase
 125kV BIL – Impulse Withstand (1.2 x 50 microsecond wave)
 40kV AC – One minute withstand
 78kV DC – 15 minutes withstand
 19kV AC – Corona Extinction @ 3pC sensitivity
 200 Amp – Continuous and Loadbreak
 10kA Sym – 10 Cycles Momentary & Fault Close

25kV	200A Loadbreak 3-Way Junction	w/ S.S. Bracket	274J3
------	-------------------------------	-----------------	-------



Each kit contains the following:

- | | | |
|---|--------------------------|---------|
| 1 | Basic molded junction | 274J3 |
| 2 | Protective shipping cap | 2701-41 |
| 2 | Tube, lubricant | 82-08 |
| 1 | Installation instruction | IS-0798 |

Ordering Instructions:

Specify **274J3** for 25kV, 200 Amp, 3-way Loadbreak Junction.

Add "-5" at the end of the catalog number for Junctions with "U" style mounting straps only.