

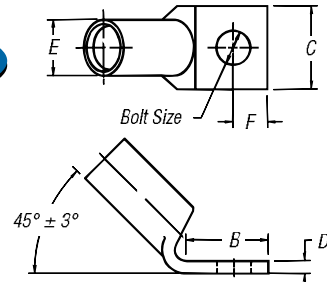
Compression Connectors for Copper Conductor

One-Hole Lugs — 45° Long Barrel 600V to 35kV

Material: High-Conductivity
Wrought Copper
Finish: Electro Tin Plate



Peep Holes Available!
Add suffix **-PH**



Connectors & Grounding — Blackburn® Compression Connectors Featuring the Color-Keyed® System

CAT. NO.	CODE	WIRE SIZE		DIMENSIONS (IN.)					DIE CODE	DIE COLOR
		FLEX CLASS G, H, I, K, M†	BOLT SIZE	B	C	D	E	F		
54929BEUF	#8 AWG	23 Navy, #8 Flex	#10	.65	.42	.08	.26	¼	21	RED
54930BEUF		37/24 = 14.9 kcmil	¼	.65	.42	.08	.26	¼	21	RED
54904BEUF	#6 AWG	61/24 = 24.6 kcmil	#10	.65	.44	.08	.30	¼	24	BLUE
54905BEUF		#6 Flex, 30 Navy	¼	.65	.44	.08	.30	¼	24	BLUE
54908BEUF	#4 AWG	40-50 Navy, #4 Weld	#10	.65	.52	.10	.37	¼	29	GRAY
54906BEUF		#5, 91/24 = 36.7 kcmil	¼	.65	.52	.10	.37	¼	29	GRAY
54933BEUF	#2-3 AWG	125/24 = 50.4 kcmil	#10	.65	.59	.11	.41	¼	33	BROWN
54942BEUF		60 Navy, #3 Weld	⅜	.88	.59	.11	.41	⅜	33	BROWN
54945BEUF	#1 AWG	75 Navy, #2 Weld	#10	.65	.68	.11	.47	¼	37	GREEN
54947BEUF		150/24 = 60.5 kcmil	⅜	.88	.68	.11	.47	⅜	37	GREEN
54946BEUF		100 Navy	#10	.65	.75	.13	.52	¼	42	PINK
54949BEUF	1/0 AWG	225/24 = 90.8 kcmil	⅜	.88	.75	.13	.52	⅜	42	PINK
54909BEUF		#1 Weld	⅜	.93	.75	.13	.52	⅜	42	PINK
54950BEUF			½	1.25	.75	.13	.52	½	42	PINK
54910BEUF	2/0 AWG	125 Navy, 1/0 Weld	⅜	.93	.83	.13	.57	⅜	45	BLACK
54951BEUF		275/24 = 111 kcmil	½	1.25	.83	.13	.57	½	45	BLACK
54965BEUF	3/0 AWG	325/24 = 131 kcmil, 150 Navy, 2/0 Weld	½	1.25	.92	.13	.63	½	50	ORANGE
54970BEUF04		200 Navy	¼	1.00	1.03	.14	.70	¼	54	PURPLE
54970BEUF06	4/0 AWG	450/24 = 182 kcmil	⅜	1.13	1.03	.14	.70	⅜	54	PURPLE
54970BEUF		3/0 Weld	½	1.25	1.03	.14	.70	½	54	PURPLE
54913BEUF	250 kcmil	550/24 = 222 kcmil, 250 Navy, 4/0 Weld	½	1.25	1.13	.14	.77	½	62	YELLOW
54914BEUF	300 kcmil	300 Navy, 250 Weld, 262, 650/24	½	1.25	1.25	.15	.85	½	66	WHITE
54915BEUF	350 kcmil		½	1.25	1.36	.18	.93	½	71	RED
54916BEUF	400 kcmil	400 Navy, 300 Weld	½	1.25	1.41	.17	.96	½	76	BLUE
54917BEUF		775/24 = 313 kcmil, 350, 259 Str.	⅜	1.58	1.41	.17	.96	⅜	76	BLUE
54918BEUF	500 kcmil	925/24 = 373 kcmil	½	1.25	1.61	.22	1.10	½	87	BROWN
54919BEUF		400 Weld, 350, 3458 Str.	⅜	1.58	1.61	.22	1.10	⅜	87	BROWN
54921BEUF	600 kcmil	450 I, K	½	1.25	1.75	.24	1.20	½	94	GREEN
54920BEUF		1100/24 = 444 kcmil	⅜	1.58	1.75	.24	1.20	⅜	94	GREEN
54922BEUF	750 kcmil	1325/24 = 535 kcmil	½	1.25	1.94	.27	1.33	½	106	BLACK
54923BEUF		500 Weld	⅜	1.58	1.94	.27	1.33	⅜	106	BLACK
58984BEUF		1600/24 = 646 kcmil	⅜	1.58	1.94	.27	1.33	⅜	106	BLACK
58926BEUF	900 kcmil	1925/24 = 777 kcmil	⅜	1.58	2.17	.31	1.50	⅜	115	YELLOW
54928BEUF	1000 kcmil		⅜	1.58	2.27	.30	1.55	⅜	125	N/A
54928BEUF12			⅜	1.83	2.37	.30	1.55	⅜	125	N/A

† Contact Technical Services for specific stranding listings

100ling: pp. F-80-F-100 Die Selector Chart: pp. F-101-F-104

Overview

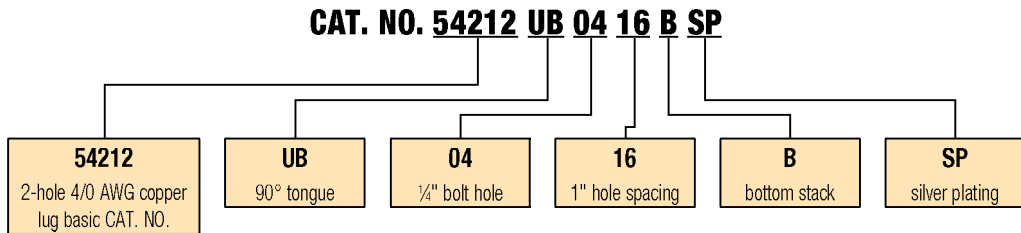
Order Form

Catalog No. _____ Qty. _____
 (For 54100, 54200, 54800 & 54900 Series Copper Lugs Only)

Design Controls and Requirements

All "MADE-UP" catalog numbers start with a standard or basic catalog number and are followed by the customer-required extra features: tongue shape, bolt hole size, distance between bolt holes, stacking, plating and inspection hole (peep hole). A code letter or a number has been assigned to each extra feature. See CODE TABLE.

- Notes:** 1) Lack of any of the extra features on the "MADE-UP" catalog number means that the standard Cat. No. features are prevalent.
 2) If either bolt hole size or distance between bolt holes needs to be changed from standard Cat. No., both code numbers will appear on the "MADE-UP" Cat. No. (See example below)



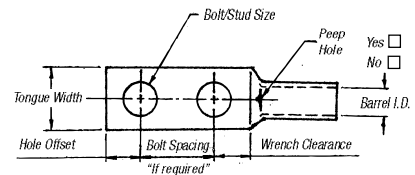
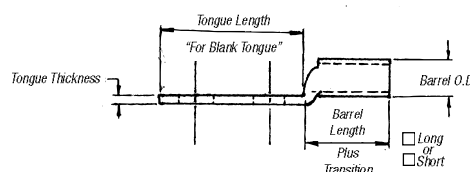
Code Table

TONGUE SHAPE		BOLT HOLES		BOLT HOLE CENTERS		STACKING		FINISH (PLATING)		INSPECTION HOLE (LONG BARREL)		INSPECTION HOLE (SHORT BARREL)		
TYPE	CODE	SIZE	.020	CODE	DISTANCE .015	CODE	TYPE	CODE	TYPE 1	CODE	I.D.	CODE	I.D.	CODE
15°	UI	#8	.173	02	1/2"	08	Top	T**	Silver Plate	SP	Peep Hole	PH	Blind End	BE
30°	UT	#10	.204	03	5/8"	10	Bottom	B	Lead Plate	LP				
45°	UF	1/4"	.281	04	3/4"	12			Nickel Plate	NP				
60°	US	5/16"	.344	05	1/2"	14			Plain Finish	PF				
90°	UB	3/8"	.406	06	1"	16			No Marking	NM				
Blank	BT	1/2"	.531	08	1 1/8"	18			Not QTP if					
(No Bolt Hole)		5/8"	.656	10	1 1/4"	20			suffix other					
		3/4"	.812	12	1 3/8"	22			than - PF or					
		7/8"	.937	14	1 1/2"	24			standard					
		1"	1.062	16	1 5/8"	26			tin plate					
					1 3/4"	28								
					1 7/8"	30								
					2"	32								

* These bolt centers not available for bolt holes larger than 3/8".

** Not required for 45° & 90° top stacking.

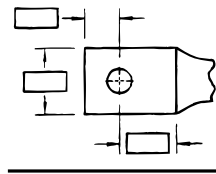
Cable	Code <input type="checkbox"/>	
	Weld <input type="checkbox"/>	
<input type="checkbox"/> #8	<input type="checkbox"/> #6	<input type="checkbox"/> #4
<input type="checkbox"/> #2	<input type="checkbox"/> #1	<input type="checkbox"/> 1/0
<input type="checkbox"/> 2/0	<input type="checkbox"/> 3/0	<input type="checkbox"/> 4/0
<input type="checkbox"/> 250 kcmil & up (Code Only)		



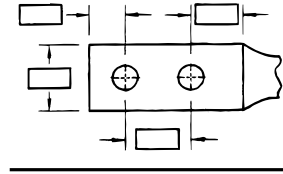
Overview

Tongue Specifications — See Chart “A” For Dimensions

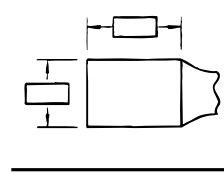
Stud Sizes		
<input type="checkbox"/> #8	<input type="checkbox"/> #10	<input type="checkbox"/> ¼"
<input type="checkbox"/> ⅜"	<input type="checkbox"/> ⅝"	<input type="checkbox"/> ½"
<input type="checkbox"/> ⅞"	<input type="checkbox"/> ¾"	<input type="checkbox"/> ⅝"
<input type="checkbox"/> 1"		



Single Hole



Double Hole



Blank

Chart A

NOMINAL BOLT HOLE SIZE .015	HOLE OFFSET .030	WRENCH CLEARANCE MIN.	TONGUE WIDTH CABLE SIZE										
			#8 CODE #8 WELD	#6 CODE #6 WELD	#4 CODE #4 WELD	#2 CODE #2 WELD	#1 CODE #1 WELD	1/0 CODE 1/0 WELD	2/0 CODE 2/0 WELD	3/0 CODE 3/0 WELD	4/0 CODE 3/0 WELD	250 CODE	
#8	.173	.200	.240	.406	.437	.562	.593	.672	.750	.825	.937	1.030	1.125
#10	.204	.218	.250	.406	.437	.562	.593	.672	.750	.825	.937	1.030	1.125
¼	.281	.250	.312	.469	.500	.562	.593	.672	.750	.825	.937	1.030	1.125
⅜	.344	.375	.406	.562	.562	.562	.675	.672	.750	.825	.937	1.030	1.125
⅝	.406	.375	.440	.578	.578	.594	.675	.672	.750	.825	.937	1.030	1.125
½	.531	.500	.562	—	—	—	.750	.750	.750	.825	.937	1.030	1.125
⅞	.656	.625	.875	—	—	—	—	—	—	—	.937	1.030	1.125
¾	.812	.750	.770	—	—	—	—	—	—	—	—	—	—
⅞*	.937	.875	.890	—	—	—	—	—	—	—	—	—	—
1*	1.062	.937	1.000	—	—	—	—	—	—	—	—	—	—

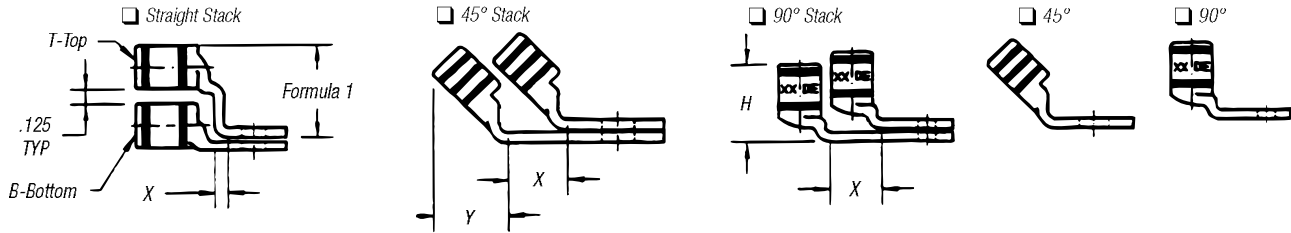
* These bolt holes available in one-hole lug only.

Chart B

CABLE SIZE	TONGUE THICKNESS	STRAIGHT LUG BARREL LENGTH PLUS TRANSITION		BARREL		DIM "X" STACKED LUGS			DIM "Y"		DIM "H"	
		SHORT	LONG	O.D.	I.D.	STRAIGHT	45°	90°	SHORT	LONG	SHORT	LONG
#8	.080	.635	.935	.260	.180	.158	.478	.394	.595	.808	.779	1.079
#6	.081	.675	.975	.296	.215	.134	.544	.432	.587	.799	.767	1.067
#4	.099	.685	.985	.365	.266	.175	.622	.502	.637	.849	.838	1.138
#2	.108	.815	1.115	.410	.302	.216	.649	.535	.711	.923	.958	1.258
#1	.106	.825	1.275	.467	.361	.212	.731	.592	.710	1.028	.956	1.406
1/0	.125	.975	1.325	.520	.396	.250	.789	.646	.794	1.042	1.075	1.425
2/0	.125	.965	1.315	.571	.446	.250	.859	.696	.829	1.077	1.125	1.475
3/0	.125	1.085	1.435	.632	.507	.250	.946	.757	.900	1.148	1.225	1.575
4/0	.137	1.255	1.705	.701	.564	.274	1.031	.826	1.015	1.333	1.387	1.837
250	.137	1.375	1.925	.766	.629	.274	1.123	.891	1.085	1.474	1.487	2.037
300	.153	1.900	2.675	.850	.660	.459	1.226	.975	1.180	1.726	1.924	2.679
350	.177	2.090	2.896	.926	.720	.531	1.333	1.103	1.267	1.830	2.096	2.896
400	.173	2.460	2.980	.960	.757	.519	1.370	1.085	1.551	1.913	2.484	2.984
500	.218	2.670	3.610	1.100	.852	.654	1.514	1.225	1.629	2.266	2.669	3.619
600	.244	2.900	3.490	1.200	.926	.732	1.630	1.325	1.762	2.147	2.897	3.497
700	.228	2.784	—	1.255	.997	.684	1.662	1.375	1.780	—	3.011	—
750	.270	3.050	3.925	1.330	1.030	.810	1.745	1.455	1.827	2.434	3.050	3.925
800	.266	3.213	—	1.375	1.079	.800	1.728	1.625	1.952	2.787	3.213	4.554
900	.313	3.450	4.550	1.500	1.145	.940	1.900	1.650	2.065	—	1.387	—
1,000	.297	3.356	4.500	1.550	1.203	.890	2.070	1.675	2.031	2.787	1.487	4.506

Note: Stacking lugs are available for one bolt only.
 Consult Factory: Straight: 700 kcmil & up.
 45°: 400 kcmil & up
 90°: 500 kcmil & up

Overview



Formula 1 = (.125 + 2 (OD) + .037 – Tongue Thickness)

Chart C

BOLT HOLE SIZE	TONGUE WIDTH .030 CODE CABLE SIZE										
	300 KCMIL 4/0 WELD	350 KCMIL	400 KCMIL	500 KCMIL 400 WELD	600 KCMIL 500 WELD	1325/24	700 KCMIL	750 KCMIL	800 KCMIL	900 KCMIL	1000 KCMIL
#8	—	—	—	—	—	—	—	—	—	—	—
#10	—	—	—	—	—	—	—	—	—	—	—
¼	1.250	1.355	1.410	1.605	1.745	1.805	1.840	1.935	2.010	2.180	2.265
⅓	1.250	1.355	1.410	1.605	1.745	1.805	1.840	1.935	2.010	2.180	2.265
⅕	1.250	1.355	1.410	1.605	1.745	1.805	1.840	1.935	2.010	2.180	2.265
½	1.250	1.355	1.410	1.605	1.745	1.805	1.840	1.935	2.010	2.180	2.265
¾	1.250	1.355	1.410	1.605	1.745	1.805	1.840	1.935	2.010	2.180	2.265
⅞	—	—	—	1.605	1.745	1.805	1.840	1.935	2.010	2.180	2.265
1*	—	—	—	—	1.745	1.805	1.840	1.935	2.010	2.180	2.265

* These bolt holes available in one-hole lug only.